

WECHAT MEDIA LTD.

# MEDIA KIT 2026

**[WWW.MALLADS.CA](http://WWW.MALLADS.CA)**

778.968.3888 604.364.7999 [booking@mallads.ca](mailto:booking@mallads.ca)

We'll put your message  
where your potential customers can see it.

All day.  
Every day.

## Mall Advertising

Our strategically placed billboards are located in some of Greater Vancouver's busiest

shopping malls, including mall entrances, food courts, and near escalators.

These prime locations generate millions of impressions each month, ensuring maximum exposure for your advertising campaign. Even better?

We customize our service to meet our clients' needs .



# Our Partner Malls

- Greater Vancouver

We are a leading Digital Out-of-Home media company in Greater Vancouver and Ontario with 40+ digital billboards in shopping malls. We were born in 2015 out of an idea fuelled by a desire to help businesses reach their customers more effectively in shopping malls mostly visited by the Asian community. Our client list reads like a who's who of corporate giants, featuring RBC, Toyota, BMO, TELUS, and numerous other major companies. Their trust in our services speaks volumes about the quality we deliver.

778.968.3888 647.964.8666 [www.mallads.ca](http://www.mallads.ca) [booking@mallads.ca](mailto:booking@mallads.ca)

Q1

## HANNAM SUPERMARKET

HNS BURNABY : 4501 NORTH RD. BURNABY, BC V3N 4R7

HNS METROTOWN : 5609 IMPERIAL ST BURNABY, BC V5J 1G1

Q2

## THE CRYSTAL MALL

4500 Kingsway, Burnaby, BC V5H 2A9

Q3

## YAOHAN CENTRE

3700 Number 3 Rd, Richmond, BC V6X 2C1

Q4

## RICHMOND PUBLIC MARKET

8260 Westminster Hwy, Richmond, BC V6X 1A7

Q5

## PARKER PLACE

4380 Number 3 Rd, Richmond, BC V6X 3V7

Q6

## RICE WORLD SUPERMARKET

8777 Odlin Rd, Richmond, BC V6X 4K8

Q7

## ADMIRALTY CENTRE

8700 McKim Way, Richmond, BC V6X 4A5

Q8

## CONTINENTAL SEAFOOD RESTAURANT

11700 Cambie Rd., Richmond, BC V6X 1L5

Q9

## PINK PEARL CHINESE SEAFOOD RESTAURANT

1132 E Hastings St, Vancouver, BC V6A 1S2

# Our Partner Malls

- Greater Toronto

We are a leading Digital Out-of-Home media company in Greater Vancouver and Ontario with 40+ digital billboards in shopping malls. We were born in 2015 out of an idea fuelled by a desire to help businesses reach their customers more effectively in shopping malls mostly visited by the Asian community. Our client list reads like a who's who of corporate giants, featuring RBC, Toyota, BMO, TELUS, and numerous other major companies. Their trust in our services speaks volumes about the quality we deliver.

778.968.3888 647.964.8666 [www.mallads.ca](http://www.mallads.ca) [booking@mallads.ca](mailto:booking@mallads.ca)

Q1

## AIGOO FOODMART IN NORTH YORK

2625 Weston Rd unit d21, North York, ON M9N 3Z6

Q2

## FRESH PALACE SUPERMARKET IN MISSISSAUGA

4040 Creditview Rd, Mississauga, ON L5C 4E3

Q3

## BTRUST SUPERMARKET IN MISSISSAUGA

1177 Central Pkwy W Unit 30, Mississauga, ON L5C 4P3

Q4

## BTRUST SUPERMARKET IN NORTH YORK

1105 Wilson Ave, North York, ON M3M 1H2

Q5

## TERRA FOODMART IN MISSISSAUGA

2458 Dundas St W, Mississauga, ON L5K 1R8

Q6

## BTRUST SUPERMARKET IN Richmond Hill

9019 Bayview Ave Richmond Hill, ON L4B 3M6

Q7

## YUANMING SUPERMARKET IN MISSISSAUGA

1000 Burnhamthorpe Rd W, Mississauga, L5C 2S4

Q8

## GALLERIA SUPERMARKET AT WELLESLEY BRANCH

5661 Steeles Ave E Scarborough, M1V 5P6

Q9

## KINGS FAIR SUPERMARKET IN SCARBOROUGH

558 Yonge St, Toronto, ON M4Y 1Z1

Q10

## MAPLETRI SUPERMARKET IN VAUGHAN

100 Edgeley Blvd, Vaughan, ON L4K 5W7

# Hannam Supermarket



**HNS Burnaby:**

#106-4501 North Rd. Burnaby, BC V3N 4R7

**HNS Metrotown:**

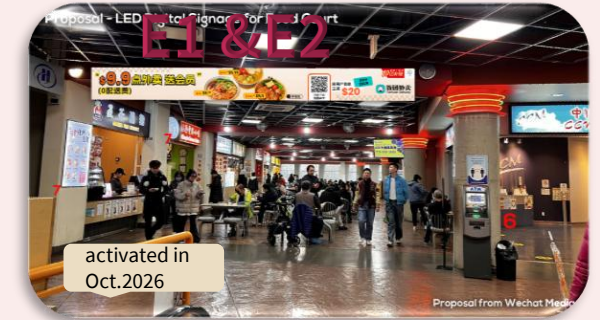
5609 Imperial St Burnaby, BC V5J 1G1

Store Location	Screen Size	File Size (Pixels)	Estimated Daily Impressions	Estimated Monthly Impressions	Annual Foot Traffic	1 Month Rate (CAD)	3 Months Rate (CAD)	6 Months Rate (CAD)	1 Year Rate (CAD)
<b>HNS Burnaby:</b> #106-4501 North Rd. Burnaby, BC V3N 4R7	W1300cm (W512 inch) x H200cm(H79 inch)	Image: W4368 x H672 Video: W3840 x H672	4,590	137,900	1,675,000	\$1,000	\$1,650	\$3,000	\$5,400
<b>HNS Metrotown:</b> 5609 Imperial St Burnaby, BC V5J 1G1	W1300cm (W512 inch) x H200cm(H79 inch)	Image: W4368 x H672 Video: W3840 x H672	1,380	41,370	502,500	\$1,000	\$1,650	\$3,000	\$5,400

**Advertisement Duration:** 15 seconds **Playback Frequency:** Each ad runs in a continuous loop and appears at least 80 times per day **Accepted File Formats:** MP4, JPG, or PNG; 72 dpi, RGB color mode

# The Crystal Mall

4500 Kingsway, Burnaby, BC V5H 2A9



Screen Locations	Screen Size	Image or Video File Size (Pixels)	Estimated Daily Impressions	Estimated Monthly Impressions	Annual Foot Traffic	1 Month Rate (CAD)	3 Months Rate (CAD)	6 Months Rate (CAD)	1 Year Rate (CAD)
<b>Screen A</b> Mounted on the entrance wall of the grocery market, Positioned in the highest foot traffic area	W384cm (W152 inch) x H256cm(H100 inch)	W1248 x H832	5,385	163K	163M	\$900	\$1,950	\$3,300	\$5,400
<b>Screen B</b> Directly facing the escalators leading from the Food Court to Level 1, Primary viewing for ascending/descending traffic	W320cm (W126 inch) x H160cm(H63 inch)	W1040 x H520	4,320	131K	131M	\$800	\$1,500	\$2,400	\$3,600
<b>Screen C</b> Directly facing the escalators leading from the Food Court to Level 1, Primary viewing for ascending/descending traffic	W320cm (W126 inch) x H160cm(H63 inch)	W1040 x H520	4,320	131K	131M	\$800	\$1,500	\$2,400	\$3,600
<b>Screen D</b> Installed above the main entrance doors on Level 1	W512cm (W202 inch) x H80cm(H32 inch)	W1664 x H260	4,320	131K	131M	\$800	\$1,500	\$2,400	\$3,600
<b>Screen E1 &amp; E2</b> Double-Sided Suspended Advertising Screen in Centrally suspended from Food Court ceiling	W800cm (W315 inch) x H80cm(H32 inch)	W1248 x H832	4,320	131K	131M	\$900	\$1,950	\$3,300	\$5,400

**Advertisement Duration:** 15 seconds **Playback Frequency:** Each ad runs in a continuous loop and appears at least 100 times per day **Accepted File Formats:** MP4, JPG, or PNG; 72 dpi, RGB Color mode

# The Crystal Mall

4500 Kingsway, Burnaby, BC V5H 2A9



Advertisement Locations	Size	Image or Video File Size (Pixels)	Estimated Daily Impressions	Estimated Monthly Impressions	Annual Foot Traffic	1 Month Rate (CAD)	3 Months Rate (CAD)	6 Months Rate (CAD)	1 Year Rate (CAD)
<b>Circular Wrap Advertising on Columns</b> Mounted on 6 concrete columns within the Food Court, 360° circular digital wraps, Highest foot traffic concentration, Captive audience with average dwell time of 60+ minutes during meals	C240cm (W95 inch) x H260cm (H102 inch)  Printing and installation fees \$400	Accepted File Formats: PDF, 300 dpi CMYK	4,320	131K	131M	\$800	\$1,500	\$2,400	\$3,600
<b>Tabletop Sticker Advertising</b> on 100+ dining tables throughout the Food Court, High-vinyl adhesive stickers with glare-resistant laminate, Maximum visibility during peak dining hours, Guaranteed viewer engagement with 60+ minute seating duration	W320cm (W126 inch) x H160cm (H63 inch)  Printing and installation fees \$50	Accepted File Formats: PDF, 300 dpi CMYK	2,880	87.6K	876K	\$60	\$150	\$240	\$360
<b>Ceiling-Mounted Digital Displays</b> 5 x 55-inch commercial-grade TVs mounted from Food Court ceiling, Optimized sightlines above seating areas	55 inch	W1920 x H1080	2,880	87.6K	876K	\$800	\$1,500	\$2,400	\$3,600

**Advertisement Duration:** 15 seconds **Playback Frequency:** Each ad runs in a continuous loop and appears at least 100 times per day **Accepted File Formats:** MP4, JPG, or PNG; 72 dpi, RGB Color mode

# Yaohan Centre

3700 Number 3 Rd, Richmond, BC V6X 2C1



Screen Locations	Screen Size	Image or Video File Size (Pixels)	Estimated Daily Impressions	Estimated Monthly Impressions	Annual Foot Traffic	1 Month Rate (CAD)	3 Months Rate (CAD)	6 Months Rate (CAD)	1 Year Rate (CAD)
<b>Screen A Main Entrance Digital Display</b> Installed above the main entrance (facing both interior) 100% exposure to all mall visitors, Captures both foot traffic from retail areas and Food Court exit flow	W600cm (W236 inch) x H225cm(H88 inch)	W1536 x H576	3,590	109K	109M	\$800	\$1,500	\$2,400	\$3,600
<b>Screen B Main Entrance Digital Display</b> Installed above the main entrance (facing both interior) 100% exposure to all mall visitors, Captures both foot traffic from retail areas and Food Court exit flow	W600cm (W236 inch) x H225cm(H88 inch)	W1536 x H576	3,590	109K	109M	\$800	\$1,500	\$2,400	\$3,600
<b>Screen C</b> On the wall facing the main entrance of the mall. It is the first visible screen upon entering, ensuring maximum visibility to all customers.	W320cm (W126 inch) x H288cm(H113inch)	W1280 x H1152	4,320	131K	131M	\$900	\$1,950	\$3,300	\$5,400
<b>Screen D</b> Positioned above the ceiling outside the T&T Supermarket checkout area.	W400cm (W158 inch) x H100cm(H40 inch)	W1024 x H256	2,880	87.6K	876K	\$250	\$450	\$600	\$900

**Advertisement Duration:** 15 seconds **Playback Frequency:** Each ad runs in a continuous loop and appears at least 100 times per day **Accepted File Formats:** MP4, JPG, or PNG; 72 dpi, RGB Color mode

# Yaohan Centre

3700 Number 3 Rd, Richmond, BC V6X 2C1



Screen Locations	Screen Size	Image or Video File Size (Pixels)	Estimated Daily Impressions	Estimated Monthly Impressions	Annual Foot Traffic	1 Month Rate (CAD)	3 Months Rate (CAD)	6 Months Rate (CAD)	1 Year Rate (CAD)
<b>Screen E</b> Positioned above the ceiling outside the T&T Supermarket checkout area.	W400cm (W158 inch) x H100cm(H40 inch)	W1024 x H256	2,880	87.6K	876K	\$250	\$450	\$600	\$900
<b>Screen F in the central area of the mall</b> Directly facing the T&T Supermarket checkout counters. It ensures maximum visibility to all customers completing their purchases.	W384cm (W152 inch) x H307cm(H120inch)	W1280 x H1024	3,590	109K	109M	\$900	\$1,950	\$3,300	\$5,400
<b>Screen G in the central area of the mall</b> On the wall opposite T&T Supermarket and facing the entrance to the escalator leading to the second floor. It effectively captures the attention of both incoming shoppers and those heading upstairs.	W576cm (W227 inch) x H230cm(H91inch)	W1920 x H768	3,590	109K	109M	\$800	\$1,500	\$2,400	\$3,600
<b>Screen H in the food court area</b> Facing the dining section. With high foot traffic and longer customer dwell time, this screen offers excellent exposure and strong advertising impact.	W768cm (W303 inch) x H77cm(H31 inch)	Image W2560xH256 Video W1920xH256	3,590	109K	109M	\$600	\$1,200	\$1,800	\$2,400

**Advertisement Duration:** 15 seconds **Playback Frequency:** Each ad runs in a continuous loop and appears at least 100 times per day **Accepted File Formats:** MP4, JPG, or PNG; 72 dpi, RGB Color mode

# Richmond Public Market

8260 Westminster Hwy, Richmond, BC V6X 1A7



Screen Locations	Size	Image or Video File Size (Pixels)	Estimated Daily Impressions	Estimated Monthly Impressions	Annual Foot Traffic	1 Month Rate (CAD)	3 Months Rate (CAD)	6 Months Rate (CAD)	1 Year Rate (CAD)
<b>Screen A / B</b> Screens A and B are located in the Level 2 Food Court, where all customers on the second floor can clearly see the prominent advertisements.	W512cm (W202 inch) x H256cm(H100inch)	W1280 x H640	3,590	109K	109M	\$600	\$1,350	\$2,100	\$3,000
<b>Tabletop Sticker Advertising</b> on 100+ dining tables throughout the Food Court, High-vinyl adhesive stickers with glare-resistant laminate, Maximum visibility during peak dining hours, Guaranteed viewer engagement with 60+ minute seating duration	W46cm x H59cm W59cm x H54cm Circle 90cm  Printing and installation fees \$50	Accepted File Formats: PDF, 300 dpi CMYK	3,590	109K	109M	\$60	\$150	\$240	\$360
<b>Decals on Glass Railing</b> Double-sided sticker advertisements placed on more than 100 glass railings in the Food Court are visible from both Level 1 and Level 2.	W100cm x H63cm  Printing and installation fees \$50	Accepted File Formats: PDF, 300 dpi CMYK	3,590	109K	109M	\$60	\$150	\$240	\$360
<b>Lightbox A/B/C/D</b> Lightbox advertisements located on both sides of the only passage leading from the Level 2 Food Court to the restrooms and parking lot.	W123cm x H203cm  Printing and installation fees\$200	Accepted File Formats: PDF, 300 dpi CMYK	2,880	87.6K	876K	\$800	\$1,500	\$2,400	\$3,600

**Advertisement Duration:** 15 seconds **Playback Frequency:** Each ad runs in a continuous loop and appears at least 100 times per day **Accepted File Formats:** MP4, JPG, or PNG; 72 dpi, RGB Color mode

# Parker Place

4380 Number 3 Rd, Richmond, BC V6X 3V7



Screen Locations	Size	Image or Video File Size (Pixels)	Estimated Daily Impressions	Estimated Monthly Impressions	Annual Foot Traffic	1 Month Rate (CAD)	3 Months Rate (CAD)	6 Months Rate (CAD)	1 Year Rate (CAD)
<b>Screen A / B</b> Screens A and B are located on the ceiling of the mall's north corridor.	W400cm (W202 inch) x H100cm(H100inch)	W1024 x H256	2,880	87.6K	876K	\$250	\$450	\$600	\$900
<b>Screen C / D</b> Screens C and D are located on the ceiling of the mall's south corridor.	W400cm (W202 inch) x H100cm(H100inch)	W1024 x H256	2,880	87.6K	876K	\$250	\$450	\$600	\$900
<b>Screen E / F Buy E or F Get A &amp; D Free</b> Screens E and F are located above the stage in the center of the Food Court.	W288cm (W113 inch) x H192cm(H76inch)	W960 x H640	2,880	87.6K	876K	\$500	\$900	\$1,200	\$1,800

**Advertisement Duration:** 15 seconds **Playback Frequency:** Each ad runs in a continuous loop and appears at least 100 times per day **Accepted File Formats:** MP4, JPG, or PNG; 72 dpi, RGB Color mode

778.968.3888 604.364.7999 [booking@mallads.ca](mailto:booking@mallads.ca)

### Rice World Supermarket



### Admiralty centre



### Continental seafood restaurant



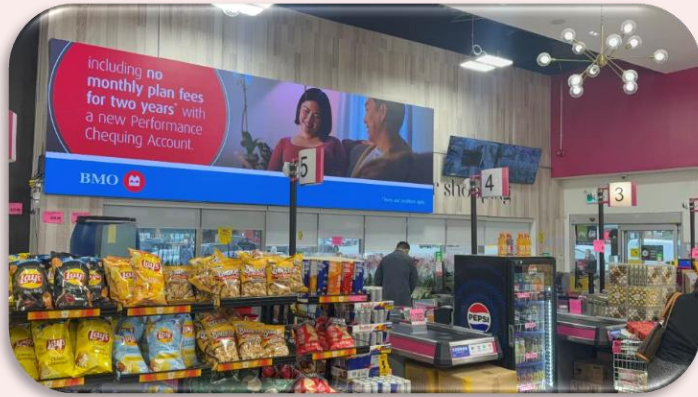
### Pink Pearl Chinese Seafood Restaurant



Screen Locations	Screen Size	Image or Video File Size (Pixels)	Estimated Daily Impressions	Estimated Monthly Impressions	Annual Foot Traffic	1 Month Rate (CAD)	3 Months Rate (CAD)	6 Months Rate (CAD)	1 Year Rate (CAD)
<b>Screen A/B in Rice World Supermarket</b> Screens A and B are located opposite the supermarket checkout counters, where all customers can see the advertisements.	W614cm (W242 inch) x H153cm(H61 inch)	W1536 x H384	2,880	87.6K	876K	\$600	\$1,350	\$2,100	\$3,000
<b>Screen in Admiralty centre</b> Screens A and B are located opposite the supermarket checkout counters, where all customers can see the advertisements.	W400cm (W158 inch) x H150cm(H59 inch)	W1344 x H504	1,440	43.8K	438K	\$500	\$900	\$1,200	\$1,800
<b>Screen in Continental seafood restaurant</b> Screens A and B are located opposite the supermarket checkout counters, where all customers can see the advertisements.	W192cm (W76 inch) x H192cm(H76 inch)	W768 x H768	2,880	87.6K	876K	\$500	\$900	\$1,200	\$1,800
<b>Screen in Pink Pearl Chinese Seafood Restaurant</b> Screens A and B are located opposite the supermarket checkout counters, where all customers can see the advertisements.	W192cm (W76 inch) x H192cm(H76 inch)	W768 x H768	2,880	87.6K	876K	\$500	\$900	\$1,200	\$1,800

**Advertisement Duration:** 15 seconds **Playback Frequency:** Each ad runs in a continuous loop and appears at least 100 times per day **Accepted File Formats:** MP4, JPG, or PNG; 72 dpi, RGB Color mode

## AIGOO FOODMART IN NORTH YORK



## TERRA FOODMART IN MISSISSAUGA



## FRESH PALACE SUPERMARKET IN MISSISSAUGA



Screen Locations	Screen Size	Image or Video File Size (Pixels)	Estimated Daily Impressions	Estimated Monthly Impressions	Annual Foot Traffic	1 Month Rate (CAD)	3 Months Rate (CAD)	6 Months Rate (CAD)	1 Year Rate (CAD)
<b>AIGOO FOODMART IN NORTH YORK</b> 2625 Weston Rd unit d21, North York, ON M9N 3Z6 Screen are located opposite the supermarket checkout counters, where all customers can see the advertisements.	W640cm (W252 inch) x H192cm(H76 inch)	W2560 x H768	1,440	43.8K	438K	\$800	\$1,500	\$2,400	\$3,600
<b>TERRA FOODMART IN MISSISSAUGA</b> 2458 Dundas St W, Mississauga, ON L5K 1R8 Screen are located opposite the supermarket checkout counters, where all customers can see the advertisements.	W896cm (W353 inch) x H96cm(H37 inch)	W3584 x H384	1,440	43.8K	438K	\$800	\$1,500	\$2,400	\$3,600
<b>FRESH PALACE SUPERMARKET IN MISSISSAUGA</b> 4040 Creditview Rd, Mississauga, ON L5C 4E3 Screen are located opposite the supermarket checkout counters, where all customers can see the advertisements.	W960cm (W378 inch) x H144cm(H57 inch)	W3840 x H576	1,440	43.8K	438K	\$800	\$1,500	\$2,400	\$3,600

**Advertisement Duration:** 15 seconds **Playback Frequency:** Each ad runs in a continuous loop and appears at least 100 times per day **Accepted File Formats:** MP4, JPG, or PNG; 72 dpi, RGB Color mode

### BTRUST SUPERMARKET IN MISSISSAUGA



### BTRUST SUPERMARKET IN NORTH YORK



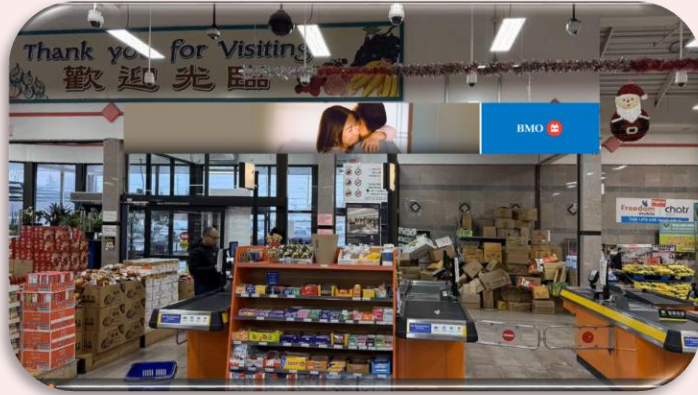
### BTRUST SUPERMARKET IN Richmond Hill



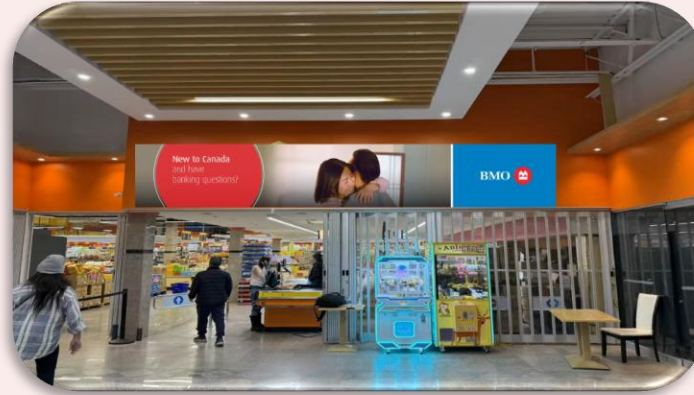
Screen Locations	Screen Size	Image or Video File Size (Pixels)	Estimated Daily Impressions	Estimated Monthly Impressions	Annual Foot Traffic	1 Month Rate (CAD)	3 Months Rate (CAD)	6 Months Rate (CAD)	1 Year Rate (CAD)
<b>BTRUST SUPERMARKET IN MISSISSAUGA</b> 1177 Central Pkwy, Mississauga, ON L5C 4P3 Screen are located opposite the supermarket checkout counters, where all customers can see the advertisements.	W896cm (W353 inch) x H96cm(H37 inch)	W3584 x H384	1,440	43.8K	438K	\$800	\$1,500	\$2,400	\$3,600
<b>BTRUST SUPERMARKET IN NORTH YORK</b> 1105 Wilson Ave, North York, ON M3M 1H2 Screen are located opposite the supermarket checkout counters, where all customers can see the advertisements.	W192cm (W76 inch) x H240cm(H95 inch)	W768 x H960	1,440	43.8K	438K	\$800	\$1,500	\$2,400	\$3,600
<b>BTRUST SUPERMARKET IN Richmond Hill</b> 9019 Bayview Ave Richmond Hill, ON L4B 3M6 Screen are located opposite the supermarket checkout counters, where all customers can see the advertisements.	W1280cm(W503inch) x H96cm(H37 inch)	W5120 x H384	1,440	43.8K	438K	\$800	\$1,500	\$2,400	\$3,600

**Advertisement Duration:** 15 seconds **Playback Frequency:** Each ad runs in a continuous loop and appears at least 100 times per day **Accepted File Formats:** MP4, JPG, or PNG; 72 dpi, RGB Color mode

### YUANMING SUPERMARKET IN MISSISSAUGA



### YUAMING SUPERMARKET IN MISSISSAUGA



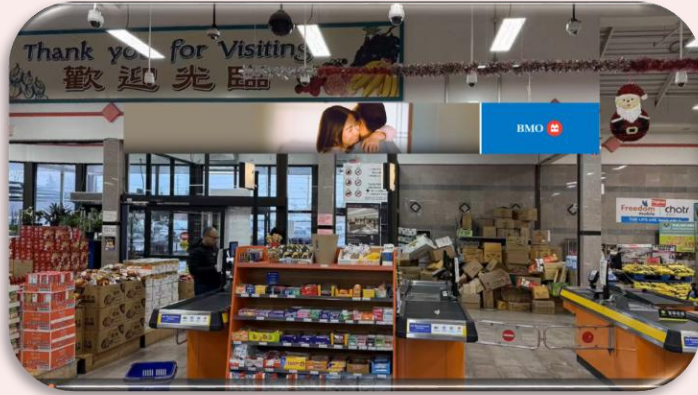
### Galleria Supermarket at Wellesley branch



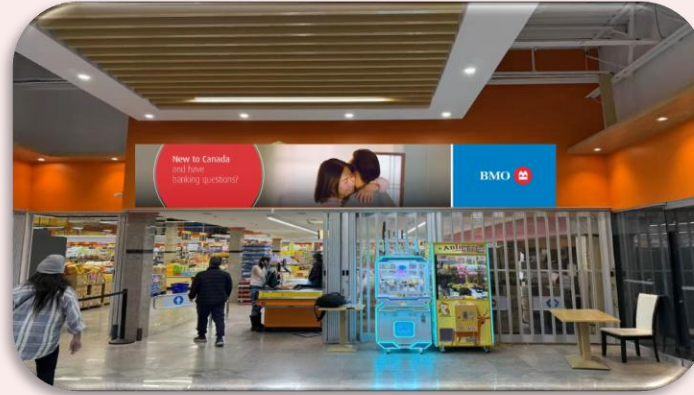
Screen Locations	Screen Size	Image or Video File Size (Pixels)	Estimated Daily Impressions	Estimated Monthly Impressions	Annual Foot Traffic	1 Month Rate (CAD)	3 Months Rate (CAD)	6 Months Rate (CAD)	1 Year Rate (CAD)
<b>YuanMing Supermarket IN MISSISSAUGA</b> 1000 Burnhamthorpe Rd W, Mississauga, L5C 2S4 Screen are located opposite the supermarket checkout counters, where all customers can see the advertisements.	W896cm (W353 inch) x H96cm(H37 inch)	W3584 x H384	1,440	43.8K	438K	\$800	\$1,500	\$2,400	\$3,600
<b>YuanMing Supermarket IN MISSISSAUGA</b> 1000 Burnhamthorpe Rd W, Mississauga, L5C 2S4 Screen are located opposite the supermarket checkout counters, where all customers can see the advertisements.	W896cm (W353 inch) x H96cm(H37 inch)	W3584 x H384	1,440	43.8K	438K	\$800	\$1,500	\$2,400	\$3,600
<b>Galleria Supermarket at Wellesley branch</b> 558 Yonge St, Toronto, ON M4Y 1Z1 Screen are located opposite the supermarket checkout counters, where all customers can see the advertisements.	W256cm (W101 inch) x H96cm(H37 inch)	W1024 x H384	1,440	43.8K	438K	\$800	\$1,500	\$2,400	\$3,600

**Advertisement Duration:** 15 seconds **Playback Frequency:** Each ad runs in a continuous loop and appears at least 100 times per day **Accepted File Formats:** MP4, JPG, or PNG; 72 dpi, RGB Color mode

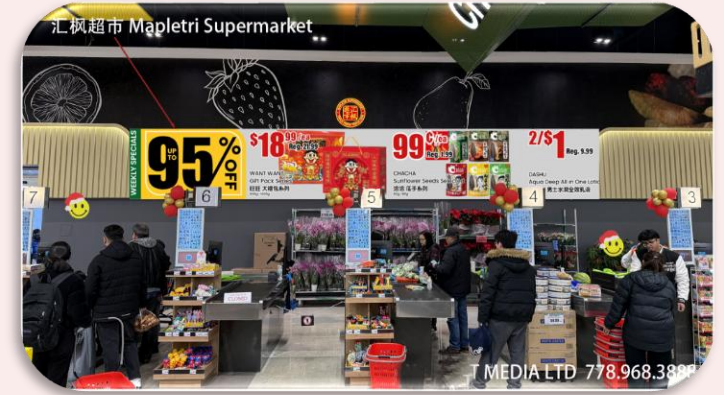
### Kings Fair Supermarket in Scarborough



### Kings Fair Supermarket in Scarborough



### Mapletri Supermarket in Vaughan



Screen Locations	Screen Size	Image or Video File Size (Pixels)	Estimated Daily Impressions	Estimated Monthly Impressions	Annual Foot Traffic	1 Month Rate (CAD)	3 Months Rate (CAD)	6 Months Rate (CAD)	1 Year Rate (CAD)
<b>Kings Fair Supermarket in Scarborough</b> 5661 Steeles Ave E Scarborough, M1V 5P6 Screen are located opposite the supermarket checkout counters, where all customers can see the advertisements. activated in May.2026	W896cm (W353 inch) x H96cm(H37 inch)	W3584 x H384	1,440	43.8K	438K	\$800	\$1,500	\$2,400	\$3,600
<b>Kings Fair Supermarket in Scarborough</b> 5661 Steeles Ave E Scarborough, M1V 5P6 Screen are located opposite the supermarket checkout counters, where all customers can see the advertisements. activated in May.2026	W896cm (W353 inch) x H96cm(H37 inch)	W3584 x H384	1,440	43.8K	438K	\$800	\$1,500	\$2,400	\$3,600
<b>Mapletri Supermarket in Vaughan</b> 100 Edgeley Blvd, Vaughan, ON L4K 5W7 Screen are located opposite the supermarket checkout counters, where all customers can see the advertisements. activated in 2026	W960cm (W378 inch) x H144cm(H56.7 inch)	W3840 x H576	1,440	43.8K	438K	\$800	\$1,500	\$2,400	\$3,600

**Advertisement Duration:** 15 seconds **Playback Frequency:** Each ad runs in a continuous loop and appears at least 100 times per day **Accepted File Formats:** MP4, JPG, or PNG; 72 dpi, RGB Color mode

WECHAT MEDIA LTD.

**Thank you**

**WWW.MALLADS.CA**

778.968.3888

647.964.8666

booking@mallads.ca